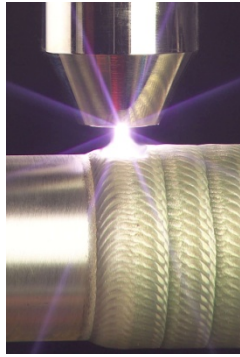


PTA process

Welding process which uses powder filler metals to produce low dilution (5-10%) welded overlays with low distortion at high deposition rates

Capacities

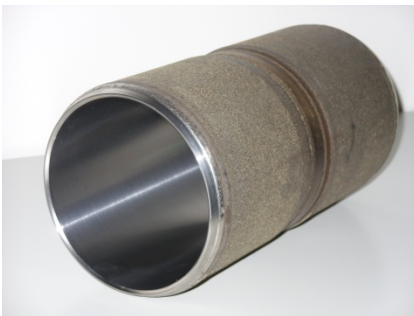
Length up to 8 feet
Diameter to 36 inches
Weight 3000 lbs



Complete Turnkey Parts

Development of complete process for the production of finished parts.
Single prototypes to high volume production

- Raw material procurement
- Weld prep design and machining
- Hardfacing
- Postweld Heat Treatment
- Finish Machining
- Inspection and Certification



DuraStell™ Process

Thin (1-3mm) low heat input coating process which can achieve laser coating properties at much lower cost. Provides a fully dense metallurgically bonded alternative to Thermal Spray coatings



Capacities

Length up to 6 feet
Diameter to 2-16 inches
Weight 1000 lbs

Typical Hardfacing Materials

- Stellite® and Tribaloy® (Cobalt)
- Deloro® (Nickel)
- Delcrome® (High Cr Iron)
- Stelcar® (Tungsten Carbide Composite)
- Corrosion Resistant Nickel Alloys

Deloro Stellite

16536 Air Center Blvd.
Houston, TX 77032 USA

Tel: 281-214-0755

Fax: 281-214-0759

Web: www.stellite.com